



P3 ANALOG GAUGE INSTALL GUIDE

Welcome to our universal installation guide for all P3 Analog Gauges. For installing the display into the vent housing, please reference our additional installation instructions at www.p3gauges.com/analog-install.

Please download the latest copy of this document from www.p3gauges.com/install

KIT CONTENTS

BOOST TUBING



DISPLAY



ANALOG CONTROL BOX



SCOTCHLOK CONNECTORS



MAIN HARNESS

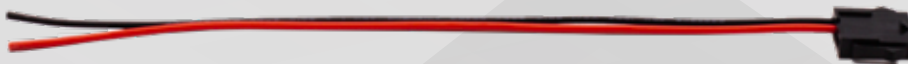


ANALOG BOOST SENSOR

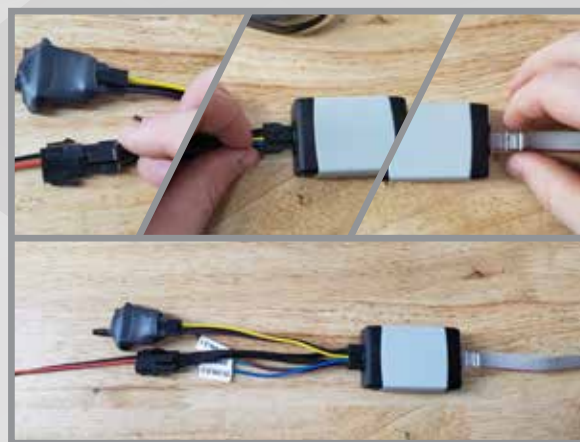
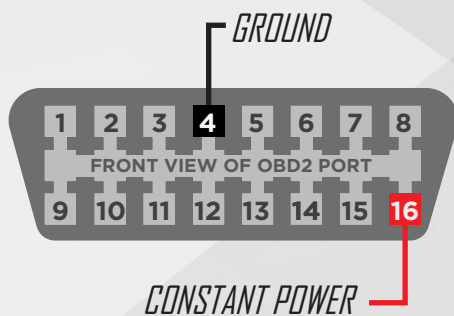
ZIP TIES



POWER HARNESS



WARRANTY & LIABILITY: Neither P3 Cars, nor its dealers or agents shall be liable in any way, for any damage, loss, injury or other claims, resulting from the installation or use of this product. By purchasing or installing this product, you assume all liability of any kind connected with the use and/or application of this product. If you are unsure that you can safely install and use this product, consult a qualified installer or mechanic. The warranty on this product covers only the product itself for a period of 6 months from the date of purchase, and it will be at our discretion to repair or replace the affected parts. No user serviceable parts inside. Warranty will be voided if product shows physical damage.



1 CONNECT TO POWER AND GROUND:

CONSTANT POWER SOURCE (DEFAULT)
Connect the red wire to constant power source. Connect the black wire to chassis ground (OBD2 port recommended for convenience)

SWITCHED POWER SOURCE (PCo.S)
Connect the red wire to switched power source. Change power control setting to "PCo.S"

2 CONNECT COMPONENTS:

PLUG POWER HARNESS INTO MAIN HARNESS
PLUG MAIN HARNESS INTO ANALOG BOX



3 CONNECT TUBING TO VACUUM SOURCE:

LOCATE SUITABLE BOOST REFERENCE

If there is not an available vacuum port you will need to supply the appropriate fitting or boost tap. (EA888 tap for VW Mk7 shown)



4 ROUTE TUBING TO ANALOG SENSOR:

ROUTE TUBING FROM VACUUM SOURCE TO ANALOG BOOST SENSOR

Avoid any hot or moving components. Avoid kinking, or pinching of the tubing.

Pass tubing through firewall using suitable grommet.



5 CONECT ANALOG SENSOR TO TUBING:

USE SUPPLIED ZIP TIES TO SECURE HOSE ON TUBING AND TAP

Super glue can also be applied in high boost applications.



6 TEST FUNCTIONALITY:

BEFORE INSTALLING DISPLAY

Plug display cable into analog box and start engine to test gauge functionality

If gauge does not start up with engine, go to troubleshooting checklist at bottom of install



Please download the latest copy of this document from www.p3gauges.com/install

Make	Year	Model	Instrument Panel	Display Model	Color
Audi	2015-2016	Audi A3	Standard	P3-100	Black
Audi	2015-2016	Audi A4	Standard	P3-100	Black
Audi	2015-2016	Audi A5	Standard	P3-100	Black
Audi	2015-2016	Audi A6	Standard	P3-100	Black
Audi	2015-2016	Audi A7	Standard	P3-100	Black
Audi	2015-2016	Audi A8	Standard	P3-100	Black
Audi	2015-2016	Audi Q5	Standard	P3-100	Black
Audi	2015-2016	Audi Q7	Standard	P3-100	Black
Audi	2015-2016	Audi Q8	Standard	P3-100	Black
Audi	2015-2016	Audi R8	Standard	P3-100	Black
Audi	2015-2016	Audi S4	Standard	P3-100	Black
Audi	2015-2016	Audi S5	Standard	P3-100	Black
Audi	2015-2016	Audi S6	Standard	P3-100	Black
Audi	2015-2016	Audi S7	Standard	P3-100	Black
Audi	2015-2016	Audi S8	Standard	P3-100	Black
Audi	2015-2016	Audi TT	Standard	P3-100	Black
Audi	2015-2016	Audi TT Roadster	Standard	P3-100	Black
Audi	2015-2016	Audi X5	Standard	P3-100	Black
Audi	2015-2016	Audi X6	Standard	P3-100	Black
Audi	2015-2016	Audi X7	Standard	P3-100	Black
Audi	2015-2016	Audi X8	Standard	P3-100	Black
Audi	2015-2016	Audi X9	Standard	P3-100	Black
Audi	2015-2016	Audi X10	Standard	P3-100	Black
Audi	2015-2016	Audi X11	Standard	P3-100	Black
Audi	2015-2016	Audi X12	Standard	P3-100	Black
Audi	2015-2016	Audi X13	Standard	P3-100	Black
Audi	2015-2016	Audi X14	Standard	P3-100	Black
Audi	2015-2016	Audi X15	Standard	P3-100	Black
Audi	2015-2016	Audi X16	Standard	P3-100	Black
Audi	2015-2016	Audi X17	Standard	P3-100	Black
Audi	2015-2016	Audi X18	Standard	P3-100	Black
Audi	2015-2016	Audi X19	Standard	P3-100	Black
Audi	2015-2016	Audi X20	Standard	P3-100	Black
Audi	2015-2016	Audi X21	Standard	P3-100	Black
Audi	2015-2016	Audi X22	Standard	P3-100	Black
Audi	2015-2016	Audi X23	Standard	P3-100	Black
Audi	2015-2016	Audi X24	Standard	P3-100	Black
Audi	2015-2016	Audi X25	Standard	P3-100	Black
Audi	2015-2016	Audi X26	Standard	P3-100	Black
Audi	2015-2016	Audi X27	Standard	P3-100	Black
Audi	2015-2016	Audi X28	Standard	P3-100	Black
Audi	2015-2016	Audi X29	Standard	P3-100	Black
Audi	2015-2016	Audi X30	Standard	P3-100	Black
Audi	2015-2016	Audi X31	Standard	P3-100	Black
Audi	2015-2016	Audi X32	Standard	P3-100	Black
Audi	2015-2016	Audi X33	Standard	P3-100	Black
Audi	2015-2016	Audi X34	Standard	P3-100	Black
Audi	2015-2016	Audi X35	Standard	P3-100	Black
Audi	2015-2016	Audi X36	Standard	P3-100	Black
Audi	2015-2016	Audi X37	Standard	P3-100	Black
Audi	2015-2016	Audi X38	Standard	P3-100	Black
Audi	2015-2016	Audi X39	Standard	P3-100	Black
Audi	2015-2016	Audi X40	Standard	P3-100	Black
Audi	2015-2016	Audi X41	Standard	P3-100	Black
Audi	2015-2016	Audi X42	Standard	P3-100	Black
Audi	2015-2016	Audi X43	Standard	P3-100	Black
Audi	2015-2016	Audi X44	Standard	P3-100	Black
Audi	2015-2016	Audi X45	Standard	P3-100	Black
Audi	2015-2016	Audi X46	Standard	P3-100	Black
Audi	2015-2016	Audi X47	Standard	P3-100	Black
Audi	2015-2016	Audi X48	Standard	P3-100	Black
Audi	2015-2016	Audi X49	Standard	P3-100	Black
Audi	2015-2016	Audi X50	Standard	P3-100	Black
Audi	2015-2016	Audi X51	Standard	P3-100	Black
Audi	2015-2016	Audi X52	Standard	P3-100	Black
Audi	2015-2016	Audi X53	Standard	P3-100	Black
Audi	2015-2016	Audi X54	Standard	P3-100	Black
Audi	2015-2016	Audi X55	Standard	P3-100	Black
Audi	2015-2016	Audi X56	Standard	P3-100	Black
Audi	2015-2016	Audi X57	Standard	P3-100	Black
Audi	2015-2016	Audi X58	Standard	P3-100	Black
Audi	2015-2016	Audi X59	Standard	P3-100	Black
Audi	2015-2016	Audi X60	Standard	P3-100	Black
Audi	2015-2016	Audi X61	Standard	P3-100	Black
Audi	2015-2016	Audi X62	Standard	P3-100	Black
Audi	2015-2016	Audi X63	Standard	P3-100	Black
Audi	2015-2016	Audi X64	Standard	P3-100	Black
Audi	2015-2016	Audi X65	Standard	P3-100	Black
Audi	2015-2016	Audi X66	Standard	P3-100	Black
Audi	2015-2016	Audi X67	Standard	P3-100	Black
Audi	2015-2016	Audi X68	Standard	P3-100	Black
Audi	2015-2016	Audi X69	Standard	P3-100	Black
Audi	2015-2016	Audi X70	Standard	P3-100	Black
Audi	2015-2016	Audi X71	Standard	P3-100	Black
Audi	2015-2016	Audi X72	Standard	P3-100	Black
Audi	2015-2016	Audi X73	Standard	P3-100	Black
Audi	2015-2016	Audi X74	Standard	P3-100	Black
Audi	2015-2016	Audi X75	Standard	P3-100	Black
Audi	2015-2016	Audi X76	Standard	P3-100	Black
Audi	2015-2016	Audi X77	Standard	P3-100	Black
Audi	2015-2016	Audi X78	Standard	P3-100	Black
Audi	2015-2016	Audi X79	Standard	P3-100	Black
Audi	2015-2016	Audi X80	Standard	P3-100	Black
Audi	2015-2016	Audi X81	Standard	P3-100	Black
Audi	2015-2016	Audi X82	Standard	P3-100	Black
Audi	2015-2016	Audi X83	Standard	P3-100	Black
Audi	2015-2016	Audi X84	Standard	P3-100	Black
Audi	2015-2016	Audi X85	Standard	P3-100	Black
Audi	2015-2016	Audi X86	Standard	P3-100	Black
Audi	2015-2016	Audi X87	Standard	P3-100	Black
Audi	2015-2016	Audi X88	Standard	P3-100	Black
Audi	2015-2016	Audi X89	Standard	P3-100	Black
Audi	2015-2016	Audi X90	Standard	P3-100	Black
Audi	2015-2016	Audi X91	Standard	P3-100	Black
Audi	2015-2016	Audi X92	Standard	P3-100	Black
Audi	2015-2016	Audi X93	Standard	P3-100	Black
Audi	2015-2016	Audi X94	Standard	P3-100	Black
Audi	2015-2016	Audi X95	Standard	P3-100	Black
Audi	2015-2016	Audi X96	Standard	P3-100	Black
Audi	2015-2016	Audi X97	Standard	P3-100	Black
Audi	2015-2016	Audi X98	Standard	P3-100	Black
Audi	2015-2016	Audi X99	Standard	P3-100	Black
Audi	2015-2016	Audi X100	Standard	P3-100	Black



7 LOOK UP DISPLAY INSTALL GUIDE:

REFERENCE VEHICLE/VENT INSTALL GUIDES
Go to p3gauges.com/analog-install/ to find the correct install guides for your vehicle.

If you purchased your gauge in an OEM vent you can skip the vent install guide.

8 INSTALL DISPLAY INTO VEHICLE:

PLUG DISPLAY CABLE INTO ANALOG BOX
Avoid steering column and pedals when routing and securing wiring and components.



WARRANTY & LIABILITY:
Neither P3 Cars, nor its dealers or agents shall be liable in any way, for any damage, loss, injury or other claims, resulting from the installation or use of this product. By purchasing or installing this product, you assume all liability of any kind connected with the use and/or application of this product. If you are unsure that you can safely install and use this product, consult a qualified installer or mechanic. The warranty on this product covers only the product itself for a period of 6 months from the date of purchase, and it will be at our discretion to repair or replace the affected parts. No user serviceable parts inside. Warranty will be voided if product shows physical damage.

NOW YOU ARE READY TO ENJOY YOUR P3 ANALOG GAUGE!