



For additional install information please visit www.p3gauges.com/install

Volkswagen Polo 5 Install Guide



1 Remove vent from vehicle.



2 Use a small screwdriver to release 8 clips holding trim piece to housing.



3 Use a screwdriver to remove vent slat assembly from vent housing.



3b

WARRANTY & LIABILITY: Neither P3 Cars, nor its dealers or agents shall be liable in any way, for any damage, loss, injury or other claims, resulting from the installation or use of this product. By purchasing or installing this product, you assume all liability of any kind connected with the use and/or application of this product. If you are unsure that you can safely install and use this product, consult a qualified installer or mechanic. The warranty on this product covers only the product itself for a period of 6 months from the date of purchase, and it will be at our discretion to repair or replace the affected parts. No user serviceable parts inside. Warranty will be voided if product shows physical damage.



4 Use side cuts to remove bottom two slats as shown.



4b



For additional install information please visit www.p3gauges.com/install



5 Feed ribbon cable through slats as shown.



6 Install display into slat assembly ensuring that tabs are lined up correctly

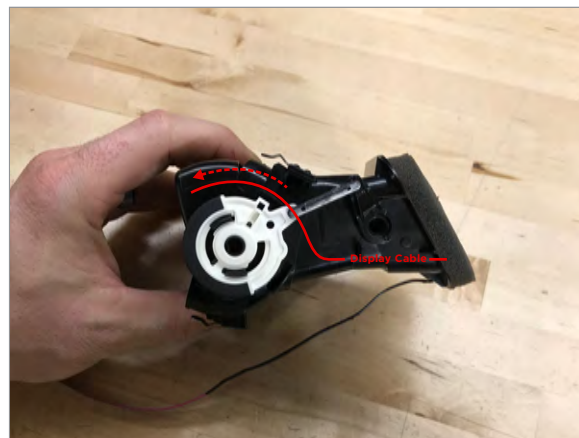


7 Glue display into place by placing glue on both tabs where shown.



8 Feed cable through vent housing as shown.

WARRANTY & LIABILITY: Neither P3 Cars, nor its dealers or agents shall be liable in any way, for any damage, loss, injury or other claims, resulting from the installation or use of this product. By purchasing or installing this product, you assume all liability of any kind connected with the use and/or application of this product. If you are unsure that you can safely install and use this product, consult a qualified installer or mechanic. The warranty on this product covers only the product itself for a period of 6 months from the date of purchase, and it will be at our discretion to repair or replace the affected parts. No user serviceable parts inside. Warranty will be voided if product shows physical damage.



9 Roll vent all the way forward and ensure cable is routed as shown. (This will ensure that you have enough slack to move vent through full range of motion)



10 Cut relief for ribbon cable in back of vent.



For additional install information please visit www.p3gauges.com/install



10b Pull foam away from vent as shown.



11 Fold ribbon cable around back of vent housing and glue foam back in to place.



12 Reinstall slat assembly into vent housing.



13 Reinstall trim on to vent housing.

WARRANTY & LIABILITY:
Neither P3 Cars, nor its dealers or agents shall be liable in any way, for any damage, loss, injury or other claims, resulting from the installation or use of this product. By purchasing or installing this product, you assume all liability of any kind connected with the use and/or application of this product. If you are unsure that you can safely install and use this product, consult a qualified installer or mechanic. The warranty on this product covers only the product itself for a period of 6 months from the date of purchase, and it will be at our discretion to repair or replace the affected parts. No user serviceable parts inside. Warranty will be voided if product shows physical damage.



You can now reinstall into vehicle.