



For additional install information please visit www.p3gauges.com/install

08-14 WRX/STI Install Guide



1 Remove vent from vehicle.



2a Use a small screwdriver to pry the vent slat assembly out of the housing.



2b Remove vent slat assembly from vent housing.



3a Cut the top two slats out approximately 1/8th inch from the edge of the assembly as shown.

WARRANTY & LIABILITY:
Neither P3 Cars, nor its dealers or agents shall be liable in any way, for any damage, loss, injury or other claims, resulting from the installation or use of this product. By purchasing or installing this product, you assume all liability of any kind connected with the use and/or application of this product. If you are unsure that you can safely install and use this product, consult a qualified installer or mechanic. The warranty on this product covers only the product itself for a period of 6 months from the date of purchase, and it will be at our discretion to repair or replace the affected parts. No user serviceable parts inside. Warranty will be voided if product shows physical damage.



3b Remove top two vent slats from the assembly.



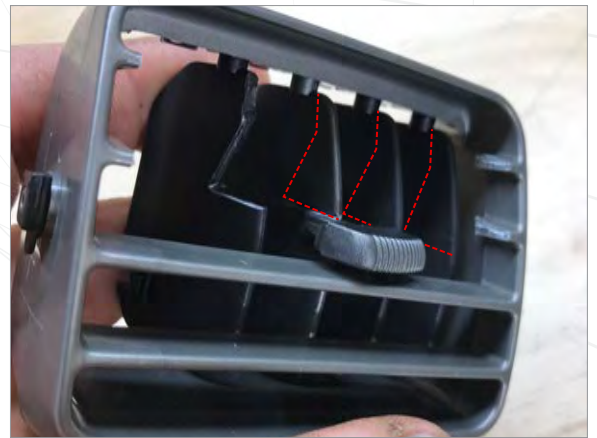
4 Cut the vertical slat connector where shown.



For additional install information please visit www.p3gauges.com/install



5 Remove far left (when viewed from front) vertical vent slat.



6a Cut relief into vertical vent slats as shown. (this helps keep the display from hitting the vent slats)



6b Slats should look similar to this. If display still contacts slats cut further back and retest.



7 Feed display ribbon cable through left side of vent as shown.

WARRANTY & LIABILITY:
Neither P3 Cars, nor its dealers or agents shall be liable in any way, for any damage, loss, injury or other claims, resulting from the installation or use of this product. By purchasing or installing this product, you assume all liability of any kind connected with the use and/or application of this product. If you are unsure that you can safely install and use this product, consult a qualified installer or mechanic. The warranty on this product covers only the product itself for a period of 6 months from the date of purchase, and it will be at our discretion to repair or replace the affected parts. No user serviceable parts inside. Warranty will be voided if product shows physical damage.



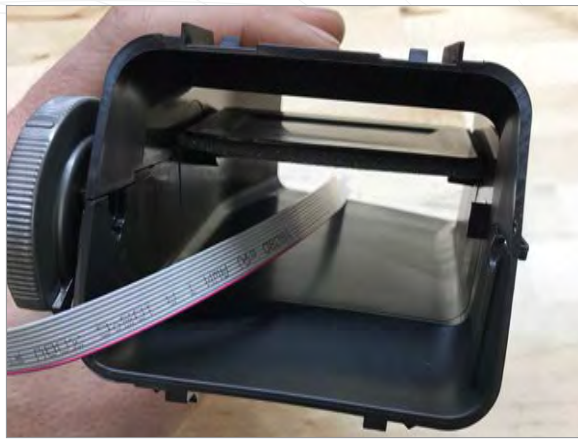
8 Push display into vent slat assembly ensuring that both tabs are between the top two vent slats.



9 Use glue to secure display to assembly where shown.



For additional install information please visit www.p3gauges.com/install



10 Feed the ribbon cable through the vent housing as shown.



11 Roll vent all the way forward and ensure cable is routed as shown. (This will ensure that you have enough slack to move vent through full range of motion)



12 With vent still rolled forward and with cable routed as shown in step 11, close vent flap and pinch cable around bottom of vent housing.

WARRANTY & LIABILITY:
Neither P3 Cars, nor its dealers or agents shall be liable in any way, for any damage, loss, injury or other claims, resulting from the installation or use of this product. By purchasing or installing this product, you assume all liability of any kind connected with the use and/or application of this product. If you are unsure that you can safely install and use this product, consult a qualified installer or mechanic. The warranty on this product covers only the product itself for a period of 6 months from the date of purchase, and it will be at our discretion to repair or replace the affected parts. No user serviceable parts inside. Warranty will be voided if product shows physical damage.



You can now reinstall into vehicle.